



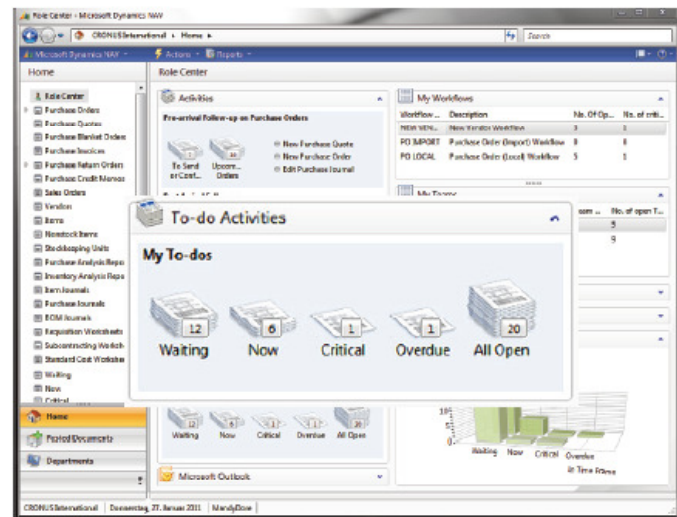
Workflow in Microsoft Dynamics NAV 2009

Guide your employees through their daily work and ensure your organization is on track with all processes.

agilesWorkflow is the workflow solution Certified for Microsoft Dynamics NAV. It extends Microsoft Dynamics NAV so that your organization can manage, simplify and automate your workflow in an even more powerful way.

BENEFITS

- > **Be assured that processes are followed correctly.** Ensure that tasks are completed in the right order at the right time and reduce your business risk by reducing the potential for mistakes, delays and problems.
- > **Gain insight into your processes.** Get better transparency and visibility into your processes, the reasons for delays or recurring problems.
- > **Get flexibility without costly and time consuming customizations.** Setup simple or sophisticated workflows according to your current business rules and dependencies, for any business area.
- > **Respond quickly to changing market or changes in processes.** Easily update and alter your workflows when your business processes change, all from within the Microsoft Dynamics NAV user interface.
- > **Help your employees to be productive.** Automate your business processes and repetitive actions and remove mundane work to ensure your employees can focus on more important tasks. Give your employees the tool to organize their work in a way that is best for the overall company's workflows.
- > **Speed up your business processes.** Automatically notify and pass tasks onto the next person or department in the workflow and ensure tasks are not forgotten with automatic reminders.



Get a complete view of all tasks and track those to-dos that are critical or overdue.

When a certain event or scenario occurs in the business and in Microsoft Dynamics NAV, agilesWorkflow will automatically trigger the appropriate workflow and notify and advise you at the right time of your assigned tasks, along with information as to what you need to do. With agilesWorkflow in Microsoft Dynamics NAV, you can get a constant view of your current workload and upcoming work directly from your Role Center. With the integration to Microsoft Outlook, you can receive automatic email notifications telling you about specific business issues, or your highest priority work.

[Read more >>](#)



FEATURES

| agilesWorkflow Business Essentials | |
|------------------------------------|---|
| Role Centers | <ul style="list-style-type: none">> Can be available for any and every role or user. |
| Business Intelligence | <ul style="list-style-type: none">> Track the current and upcoming workload for your teams and individuals directly from your Role Center.> View and analyze the performance of your organization and teams. |
| Outlook Integration | <ul style="list-style-type: none">> Keep on track with automatic email notifications alerting you to issues or overdue work.> Work productively and access tasks directly within Outlook. |
| Document Management | <ul style="list-style-type: none">> Attach documents to workflows, tasks or relevant records and track all files.> Be automatically advised of missing or incorrect documents.> Force the review and checking of critical documents. |
| Data Consistency | <ul style="list-style-type: none">> Setup data default rules, and simplify data setup and data updates with automatic setting and modifying of data.> Receive automatic notifications if the data is inaccurate. |
| External Programs | <ul style="list-style-type: none">> Connect to SharePoint to distribute tasks and workflow information outside of Microsoft Dynamics NAV.> Export workflows to Microsoft Project at the click of a button for a graphical view. |
| Advanced Workflow | <ul style="list-style-type: none">> Setup predecessor and successor relationship to ensure all prerequisites are fulfilled before a task is forwarded.> Manage complex workflows with decision trees and looping. |

See how choosing agilesWorkflow has helped these companies:



"All our employees are guided through their daily work and we have been able to automate steps in our processes, so that overall employee productivity has increased by at least 10%."

Matthias Claus, Managing Director, M3 Electronic



"We can be sure our processes are being done in the correct way, we are avoiding costly mistakes and problems and feel safe because our business risk is reduced."

Heike Hein, Project Sponsor, Markant



For more information contact Competitive Edge Services at CES@CEServices.com or call (508) 983-1990.